

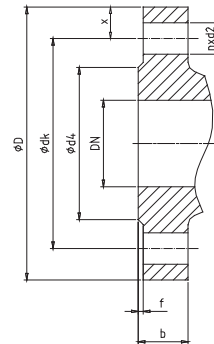
Flanschabmessungen des Ventiles

Dimension of flanges of the valve

Dimension des brides de la vanne

Maße nach DIN EN 1092 sowie ASME/ANSI 16.5

| DN | PN/class | D | b | f | dk | d4 | d2 | n | Gew. | x |
|--------|----------|-----|----|-----|-----|-----|------|---|------|------|
| 15 | 16 | 95 | 14 | 2 | 65 | 45 | 14 | 4 | M12 | 15 |
| | 25 | 95 | 16 | 2 | 65 | 45 | 14 | 4 | M12 | 15 |
| | 40 | 95 | 16 | 2 | 65 | 45 | 14 | 4 | M12 | 15 |
| 1/2" | #150 | 89 | 11 | 1,6 | 60 | 35 | 16 | 4 | 1/2" | 14,5 |
| | #300 | 95 | 14 | 1,6 | 67 | 35 | 16 | 4 | 1/2" | 14 |
| 20 | 16 | 105 | 16 | 2 | 75 | 58 | 14 | 4 | M12 | 15 |
| | 25 | 105 | 18 | 2 | 75 | 58 | 14 | 4 | M12 | 15 |
| | 40 | 105 | 18 | 2 | 75 | 58 | 14 | 4 | M12 | 15 |
| 3/4" | #150 | 98 | 13 | 1,6 | 70 | 43 | 16 | 4 | 1/2" | 14 |
| | #300 | 117 | 16 | 1,6 | 83 | 43 | 19 | 4 | 5/8" | 17 |
| 25 | 16 | 115 | 16 | 2 | 85 | 68 | 14 | 4 | M12 | 15 |
| | 25 | 115 | 18 | 2 | 85 | 68 | 14 | 4 | M12 | 15 |
| | 40 | 115 | 18 | 2 | 85 | 68 | 14 | 4 | M12 | 15 |
| 1" | #150 | 108 | 14 | 1,6 | 79 | 51 | 16 | 4 | 1/2" | 14,5 |
| | #300 | 124 | 18 | 1,6 | 89 | 51 | 19 | 4 | 5/8" | 17,5 |
| 32 | 16 | 140 | 16 | 2 | 100 | 78 | 18 | 4 | M16 | 20 |
| | 25 | 140 | 18 | 2 | 100 | 78 | 18 | 4 | M16 | 20 |
| | 40 | 140 | 18 | 2 | 100 | 78 | 18 | 4 | M16 | 20 |
| 1 1/4" | #150 | 117 | 16 | 1,6 | 89 | 64 | 16 | 4 | 1/2" | 14 |
| | #300 | 133 | 19 | 1,6 | 98 | 64 | 19 | 4 | 5/8" | 17,5 |
| 40 | 16 | 150 | 16 | 3 | 110 | 88 | 18 | 4 | M16 | 20 |
| | 25 | 150 | 18 | 3 | 110 | 88 | 18 | 4 | M16 | 20 |
| | 40 | 150 | 18 | 3 | 110 | 88 | 18 | 4 | M16 | 20 |
| 1 1/2" | #150 | 127 | 18 | 1,6 | 98 | 73 | 16 | 4 | 1/2" | 14,5 |
| | #300 | 156 | 21 | 1,6 | 114 | 73 | 22,2 | 4 | 3/4" | 21 |
| 50 | 16 | 165 | 18 | 3 | 125 | 102 | 18 | 4 | M16 | 20 |
| | 25 | 165 | 20 | 3 | 125 | 102 | 18 | 4 | M16 | 20 |
| | 40 | 165 | 20 | 3 | 125 | 102 | 18 | 4 | M16 | 20 |
| 2" | #150 | 152 | 19 | 1,6 | 121 | 92 | 19 | 4 | 5/8" | 15,5 |
| | #300 | 165 | 22 | 1,6 | 127 | 92 | 19 | 8 | 5/8" | 19 |
| 65 | 16 | 185 | 18 | 3 | 145 | 122 | 18 | 4 | M16 | 20 |
| | 25 | 185 | 22 | 3 | 145 | 122 | 18 | 8 | M16 | 20 |
| | 40 | 185 | 22 | 3 | 145 | 122 | 18 | 8 | M16 | 20 |
| 2 1/2" | #150 | 178 | 22 | 1,6 | 140 | 105 | 19 | 4 | 5/8" | 19 |
| | #300 | 190 | 25 | 1,6 | 149 | 105 | 22 | 8 | 3/4" | 20,5 |
| 80 | 16 | 200 | 20 | 3 | 160 | 138 | 18 | 8 | M16 | 20 |
| | 25 | 200 | 24 | 3 | 160 | 138 | 18 | 8 | M16 | 20 |
| | 40 | 200 | 24 | 3 | 160 | 138 | 18 | 8 | M16 | 20 |
| 3" | #150 | 190 | 24 | 1,6 | 152 | 127 | 19 | 4 | 5/8" | 19 |
| | #300 | 210 | 29 | 1,6 | 168 | 127 | 22 | 8 | 3/4" | 21 |



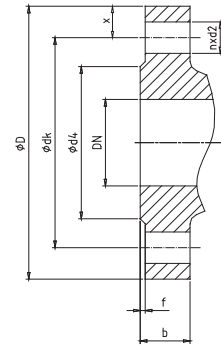
Flanschabmessungen des Ventiles

Dimension of Flanges of the valve

Dimension des brides de la vanne

Maße nach DIN EN 1092 sowie ASME/ANSI 16.

| DN | PN/class | D | b | f | dk | d4 | d2 | n | Gew. | x |
|-----|----------|-----|----|-----|-----|-----|----|----|--------|------|
| 100 | 16 | 220 | 20 | 3 | 180 | 158 | 18 | 8 | M16 | 20 |
| | 25 | 235 | 24 | 3 | 190 | 162 | 22 | 8 | M20 | 22,5 |
| | 40 | 235 | 24 | 3 | 190 | 162 | 22 | 8 | M20 | 22,5 |
| 4" | #150 | 229 | 23 | 1,6 | 190 | 158 | 19 | 8 | 5/8" | 19,5 |
| | #300 | 254 | 32 | 1,6 | 200 | 158 | 22 | 8 | 3/4" | 27 |
| 125 | 16 | 250 | 22 | 3 | 210 | 188 | 18 | 8 | M16 | 20 |
| | 25 | 270 | 26 | 3 | 220 | 188 | 26 | 8 | M24 | 25 |
| | 40 | 270 | 26 | 3 | 220 | 188 | 26 | 8 | M24 | 25 |
| 5" | #150 | 254 | 23 | 1,6 | 216 | 186 | 22 | 8 | 3/4" | 19 |
| | #300 | 279 | 35 | 1,6 | 235 | 186 | 22 | 8 | 3/4" | 22 |
| 150 | 16 | 285 | 22 | 3 | 240 | 212 | 22 | 8 | M20 | 22,5 |
| | 25 | 300 | 28 | 3 | 250 | 218 | 26 | 8 | M24 | 25 |
| | 40 | 300 | 28 | 3 | 250 | 218 | 26 | 8 | M24 | 25 |
| 6" | #150 | 280 | 25 | 1,6 | 241 | 216 | 22 | 8 | 3/4" | 19,5 |
| | #300 | 318 | 36 | 1,6 | 270 | 216 | 22 | 12 | 3/4" | 24 |
| 200 | 16 | 340 | 24 | 3 | 295 | 268 | 22 | 12 | M20 | 22,5 |
| | 25 | 360 | 30 | 3 | 310 | 278 | 26 | 12 | M24 | 25 |
| | 40 | 375 | 34 | 3 | 320 | 285 | 30 | 12 | M27 | 27,5 |
| 8" | #150 | 343 | 28 | 1,6 | 299 | 270 | 22 | 8 | 3/4" | 22 |
| | #300 | 381 | 41 | 1,6 | 330 | 270 | 25 | 12 | 7/8" | 25,5 |
| 250 | 16 | 405 | 26 | 3 | 355 | 320 | 26 | 12 | M24 | 25 |
| | 25 | 425 | 32 | 3 | 370 | 335 | 30 | 12 | M27 | 27,5 |
| | 40 | 450 | 38 | 3 | 385 | 345 | 33 | 12 | M30 | 32,5 |
| 10" | #150 | 406 | 30 | 1,6 | 362 | 324 | 25 | 12 | 7/8" | 22 |
| | #300 | 445 | 48 | 1,6 | 387 | 324 | 28 | 16 | 1" | 29 |
| 300 | 16 | 460 | 28 | 4 | 410 | 378 | 26 | 12 | M24 | 25 |
| | 25 | 485 | 34 | 4 | 430 | 395 | 30 | 16 | M27 | 27,5 |
| | 40 | 515 | 42 | 4 | 450 | 410 | 33 | 16 | M30 | 32,5 |
| 12" | #150 | 483 | 32 | 1,6 | 432 | 381 | 25 | 12 | 7/8" | 25,5 |
| | #300 | 521 | 51 | 1,6 | 450 | 381 | 32 | 16 | 1 1/8" | 35,5 |
| 400 | 16 | 580 | 32 | 4 | 525 | 490 | 30 | 16 | M27 | 27,5 |
| | 25 | 620 | 40 | 4 | 550 | 505 | 36 | 16 | M33 | 35 |
| | 40 | 660 | 50 | 4 | 585 | 535 | 39 | 16 | M36 | 37,5 |
| 16" | #150 | 596 | 36 | 1,6 | 540 | 470 | 29 | 16 | 1" | 28 |
| | #300 | 648 | 57 | 1,6 | 571 | 470 | 35 | 20 | 1 1/4" | 38,5 |



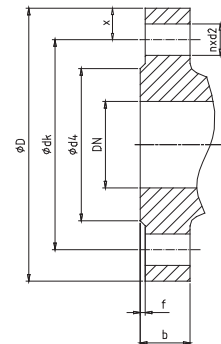
Flanschabmessungen des Ventiles

Dimension of Flanges of the valve

Dimension des brides de la vanne

Maße nach DIN EN 1092 sowie ASME/ANSI 16.

| DN | PN/class | D | b | f | dk | d4 | d2 | n | Gew. | x |
|--------|----------|-----|----|-----|-----|-----|------|----|--------|------|
| 15 | 63 | 105 | 20 | 2 | 75 | 45 | 14 | 4 | M12 | 15 |
| | 100 | 105 | 20 | 2 | 75 | 45 | 14 | 4 | M12 | 15 |
| | 160 | 105 | 20 | 2 | 75 | 45 | 14 | 4 | M12 | 15 |
| 1/2" | #600 | 95 | 21 | 6,4 | 67 | 35 | 16 | 4 | 1/2" | 14 |
| | #900 | 121 | 29 | 6,4 | 83 | 35 | 16 | 4 | 3/4" | 19 |
| 25 | 63 | 140 | 24 | 2 | 100 | 68 | 18 | 4 | M16 | 20 |
| | 100 | 140 | 24 | 2 | 100 | 68 | 18 | 4 | M16 | 20 |
| | 160 | 140 | 24 | 2 | 100 | 68 | 18 | 4 | M16 | 20 |
| 1" | #600 | 124 | 24 | 6,4 | 89 | 51 | 19 | 4 | 5/8" | 17,5 |
| | #900 | 149 | 35 | 6,4 | 102 | 51 | 25 | 4 | 7/8" | 23,5 |
| 40 | 63 | 170 | 26 | 3 | 125 | 88 | 22 | 4 | M20 | 20 |
| | 100 | 170 | 26 | 3 | 125 | 88 | 22 | 4 | M20 | 22,5 |
| | 160 | 170 | 26 | 3 | 125 | 88 | 22 | 4 | M20 | 22,5 |
| 1 1/2" | #600 | 156 | 29 | 6,4 | 114 | 73 | 22,2 | 4 | 3/4" | 21 |
| | #900 | 178 | 38 | 6,4 | 124 | 73 | 29 | 4 | 1" | 27 |
| 50 | 63 | 180 | 26 | 3 | 135 | 102 | 22 | 4 | M20 | 22,5 |
| | 100 | 195 | 28 | 3 | 145 | 102 | 26 | 4 | M24 | 25 |
| | 160 | 195 | 30 | 3 | 145 | 102 | 26 | 4 | M24 | 25 |
| 2" | #600 | 165 | 32 | 6,4 | 127 | 92 | 19 | 8 | 5/8" | 19 |
| | #900 | 216 | 45 | 6,4 | 165 | 92 | 25 | 8 | 7/8" | 25,5 |
| 65 | 63 | 205 | 26 | 3 | 160 | 122 | 22 | 8 | M20 | 22,5 |
| | 100 | 220 | 30 | 3 | 170 | 122 | 26 | 8 | M24 | 25 |
| | 160 | 220 | 34 | 3 | 170 | 122 | 26 | 8 | M24 | 25 |
| 2 1/2" | #600 | 190 | 35 | 6,4 | 149 | 105 | 22 | 8 | 3/4" | 20,5 |
| | #900 | 244 | 48 | 6,4 | 190 | 105 | 29 | 8 | 1" | 27 |
| 80 | 63 | 215 | 28 | 3 | 170 | 138 | 22 | 8 | M20 | 22,5 |
| | 100 | 230 | 32 | 3 | 180 | 138 | 26 | 8 | M24 | 25 |
| | 160 | 230 | 36 | 3 | 180 | 138 | 26 | 8 | M24 | 25 |
| 3" | #600 | 210 | 38 | 6,4 | 168 | 127 | 22 | 8 | 3/4" | 21 |
| | #900 | 267 | 45 | 6,4 | 203 | 127 | 32 | 8 | 7/8" | 32 |
| 100 | 63 | 250 | 30 | 3 | 200 | 162 | 26 | 8 | M24 | 25 |
| | 100 | 265 | 36 | 3 | 210 | 162 | 30 | 8 | M27 | 27,5 |
| | 160 | 265 | 40 | 3 | 210 | 162 | 30 | 8 | M27 | 27,5 |
| 4" | #600 | 273 | 45 | 6,4 | 216 | 158 | 25 | 8 | 7/8" | 28,5 |
| | #900 | 292 | 51 | 6,4 | 235 | 158 | 32 | 8 | 1 1/8" | 28,5 |
| 125 | 63 | 295 | 34 | 3 | 240 | 188 | 30 | 8 | M27 | 27,5 |
| | 100 | 315 | 40 | 3 | 250 | 188 | 33 | 8 | M30 | 32,5 |
| | 160 | 315 | 44 | 3 | 250 | 188 | 33 | 8 | M30 | 32,5 |
| 5" | #600 | 330 | 51 | 6,4 | 267 | 186 | 29 | 8 | 1" | 31,5 |
| | #900 | 349 | 57 | 6,4 | 279 | 186 | 34 | 8 | 1 1/4" | 35 |
| 150 | 63 | 345 | 36 | 3 | 280 | 218 | 33 | 8 | M30 | 32,5 |
| | 100 | 355 | 44 | 3 | 290 | 218 | 33 | 12 | M30 | 32,5 |
| | 160 | 355 | 50 | 3 | 290 | 218 | 33 | 12 | M30 | 32,5 |
| 6" | #600 | 355 | 54 | 6,4 | 292 | 216 | 28 | 12 | 1" | 31,5 |
| | #900 | 381 | 62 | 6,4 | 318 | 216 | 32 | 12 | 1 1/8" | 31,5 |
| 200 | 63 | 415 | 42 | 3 | 345 | 285 | 36 | 12 | M33 | 35 |
| | 100 | 430 | 52 | 3 | 360 | 285 | 36 | 12 | M33 | 35 |
| | 160 | 430 | 60 | 3 | 360 | 285 | 36 | 12 | M33 | 35 |
| 8" | #600 | 419 | 62 | 6,4 | 351 | 270 | 32 | 12 | 1 1/8" | 34 |
| | #900 | 470 | 70 | 6,4 | 394 | 270 | 38 | 12 | 1 3/8" | 38 |
| 250 | 63 | 470 | 46 | 3 | 400 | 345 | 36 | 12 | M33 | 35 |
| | 100 | 505 | 60 | 3 | 430 | 345 | 39 | 12 | M36 | 37,5 |
| | 160 | 515 | 68 | 3 | 430 | 345 | 42 | 12 | M39 | 37,5 |
| 10" | #600 | 508 | 70 | 6,4 | 432 | 324 | 34 | 16 | 1 1/4" | 38 |
| | #900 | 546 | 76 | 6,4 | 470 | 324 | 38 | 16 | 1 3/8" | 38 |
| 300 | 63 | 530 | 52 | 4 | 460 | 410 | 36 | 16 | M33 | 35 |
| | 100 | 585 | 68 | 4 | 500 | 410 | 42 | 16 | M39 | 42,5 |
| | 160 | 585 | 78 | 4 | 500 | 410 | 42 | 16 | M39 | 42,5 |
| 12" | #600 | 559 | 73 | 6,4 | 489 | 381 | 34 | 20 | 1 1/4" | 35 |
| | #900 | 610 | 86 | 6,4 | 533 | 381 | 38 | 20 | 1 3/8" | 38,5 |



Technische Änderung vorbehalten / Subject to technical alteration / Sous réserve de modifications techniques

Regeltechnik Kornwestheim GmbH
Max-Planck-Straße 3
70806 Kornwestheim
Germany

Telefon +49 7154 1314-0
Telefax +49 7154 1314-333
Internet: <http://www.rtk.de>
e-mail: info@rtk.de



**REGELTECHNIK
KORNWESTHEIM**

A subsidiary of CIRCOR International